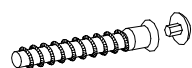
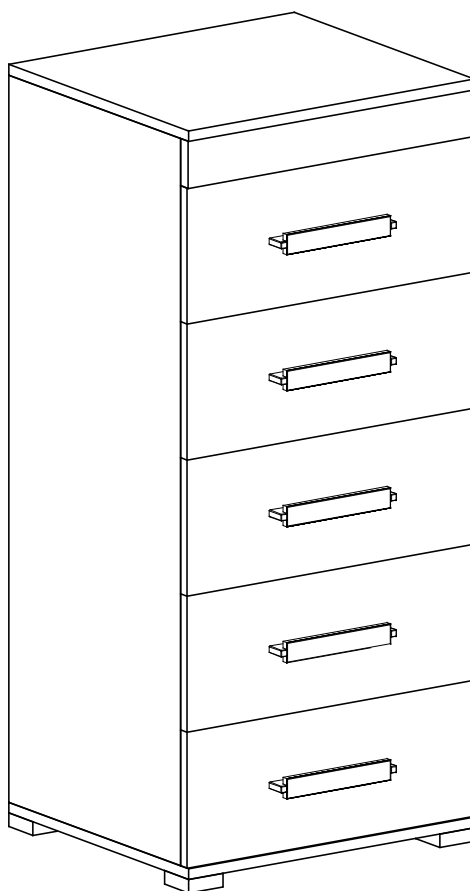
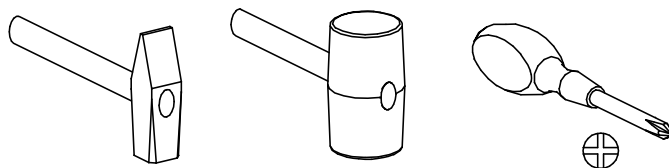
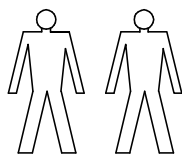


M-9

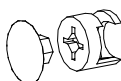
Komoda 50 – 5sz

INSTRUKCJA MONTAŻU

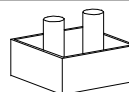
Narzędzia potrzebne do montażu



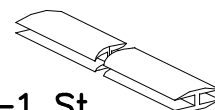
G-20 St.



K-22 St.



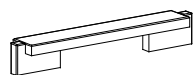
R-4 St.



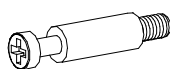
H-1 St.



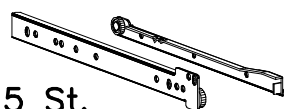
S-10 St.
4x27



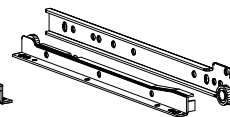
U-5 St.



N-22 St.



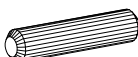
J-5 St.



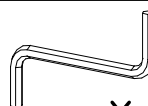
Z-40 St.
3,5x16



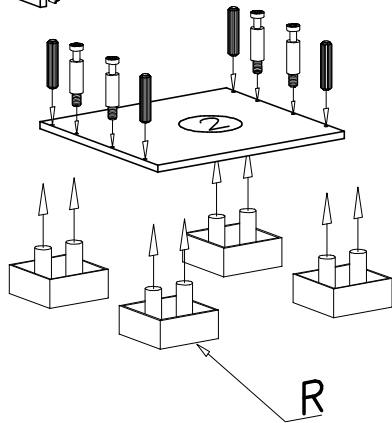
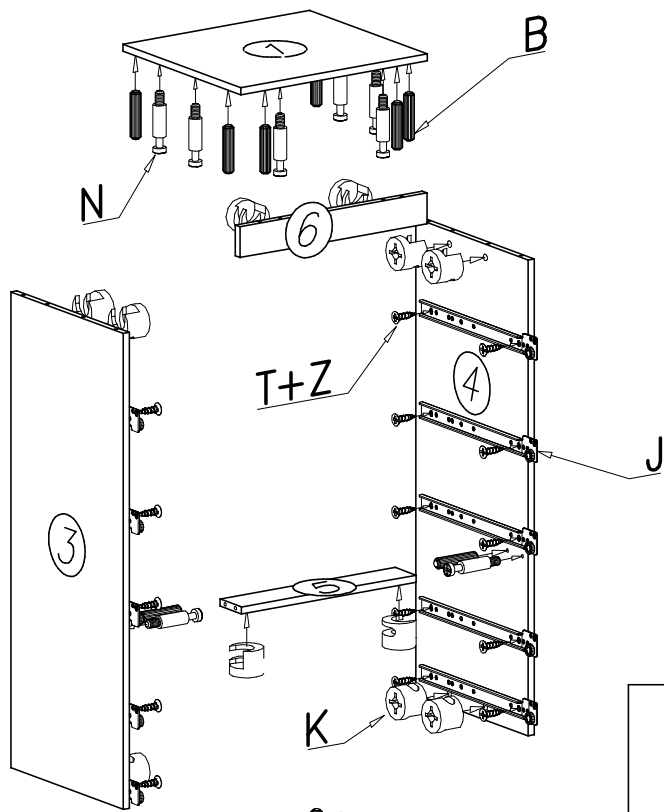
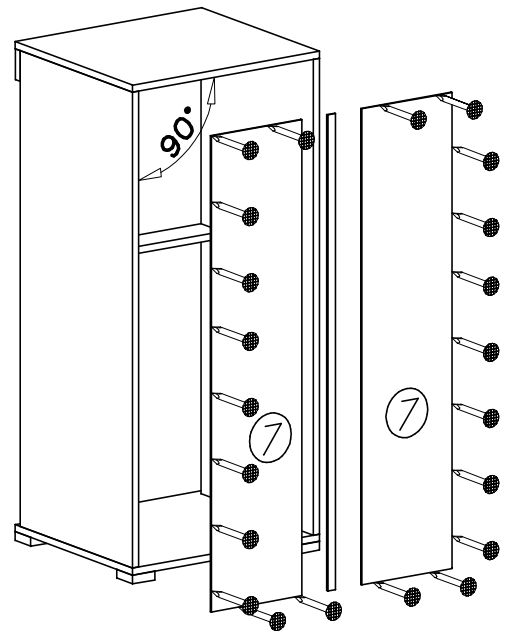
E-80 St.



B-32 St.



Y-1 St.

I**II****III**